

Prevents Cracking by Thermal Fatigue & Shock

Features

- No residual crack even under thermal fatigue
- No residual crack even under physical loading
- Uncracked flux prevents migration causing condensation

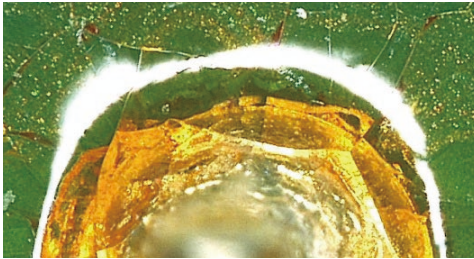


Revolutionary Products

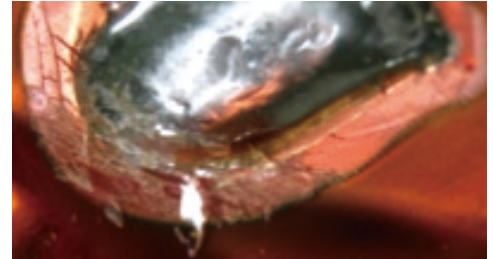
- Soft residual flux is uncracked

Even under thermal shock "stress"
-30°C/30min ⇄ +110°C/30min 1000cyc.

Conventional product



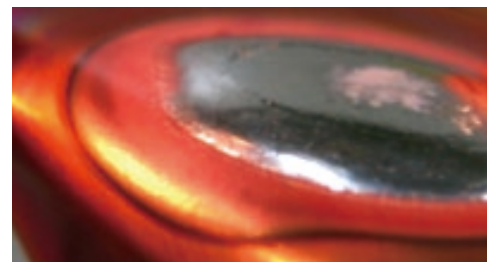
Conventional product



MACROS



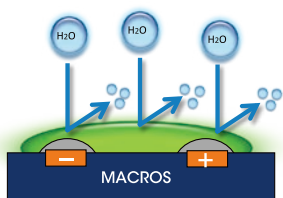
MACROS



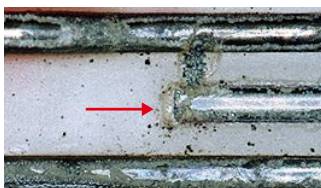
- No "Ion migration" even under PCT conditions

High insulation, high water repellency
and high adhesion suppress ion migration

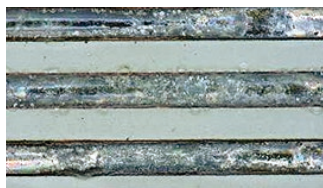
[Test conditions]
Temperature: 121°C
Humidity: 100% RH
Atmospheric pressure: 2 atm
Applied voltage: 50V



Conventional product



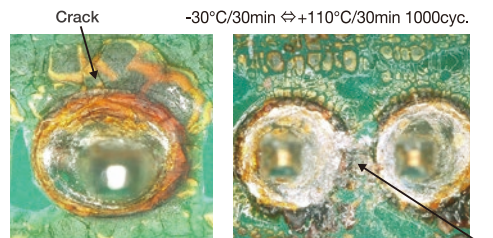
MACROS



5V applied after pure water drops

-30°C/30min ⇄ +110°C/30min 1000cyc.

Conventional product



MACROS

